

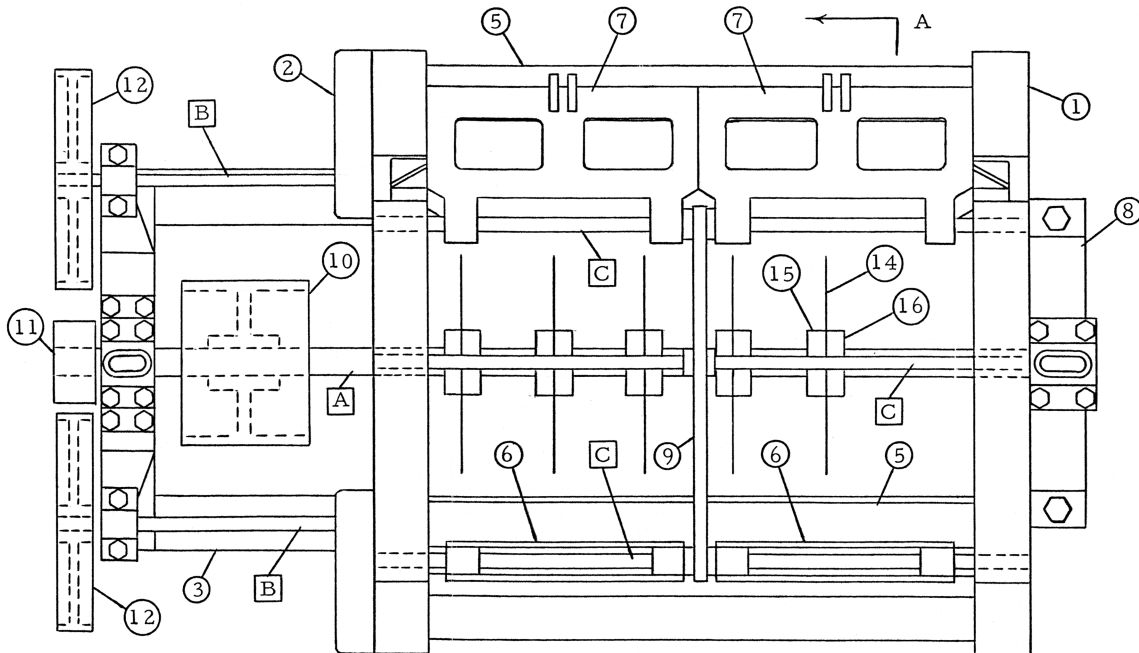
WP-910 Edger

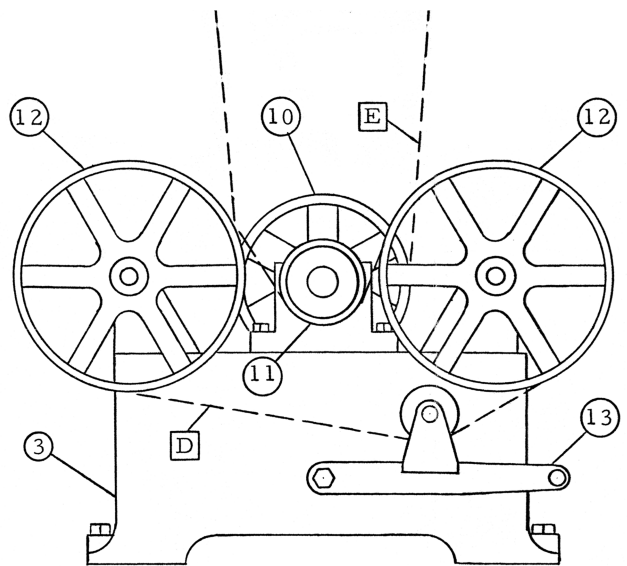
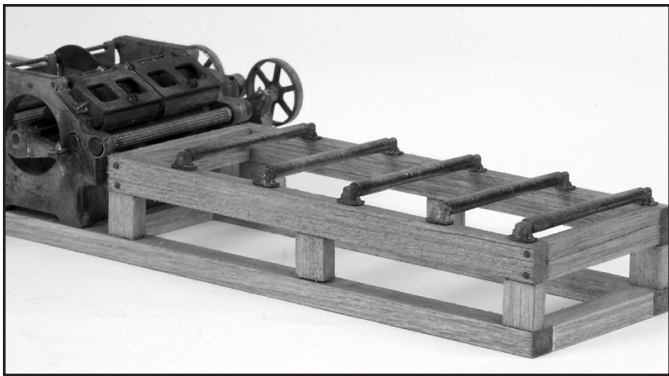
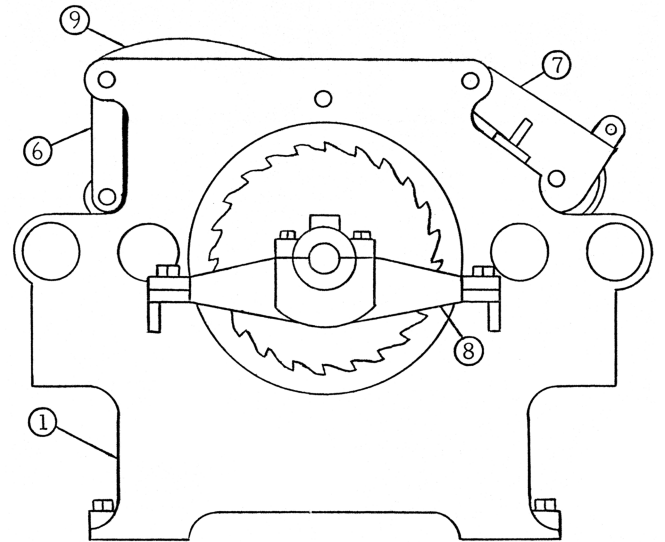
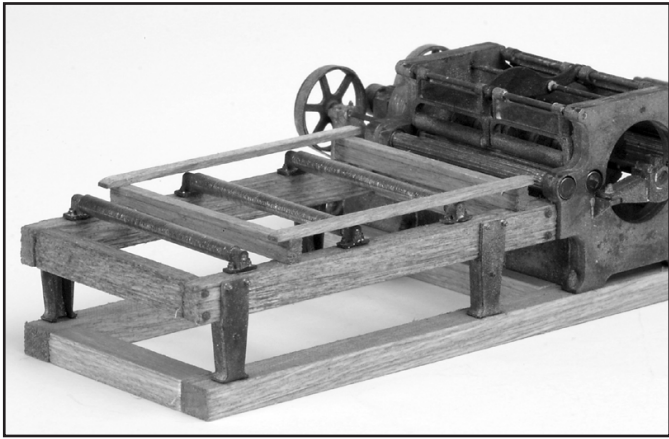
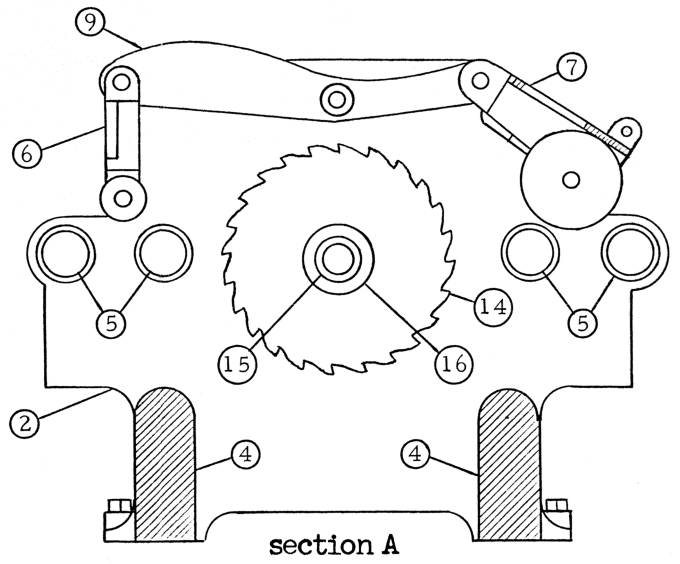
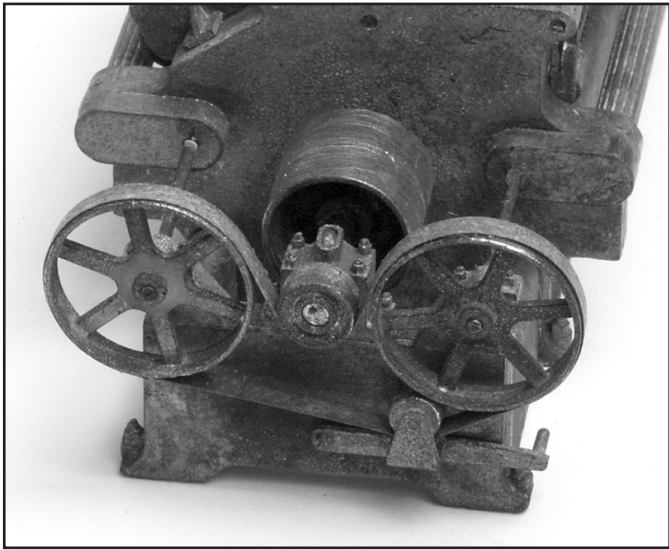
WP-910 Parts Provided:

1. R.H. Side Frame
2. L.H. Side Frame
3. Power Frame Assembly (3 pcs.)
4. Frame Spacer (2)
5. Feed Roll (4)
6. Front Pressure Roll (2)
7. Rear Pressure Roll (2)
8. Bearing
9. Center Piece
10. Driven Wheel
11. Feed Drive Wheel
12. Feed Driven Wheel (2)
13. Belt Tightener
14. Blade (5)
15. Blade Arbor (5)
16. Blade Collar (5)
17. Foot (4)
18. Roll Assembly (8)

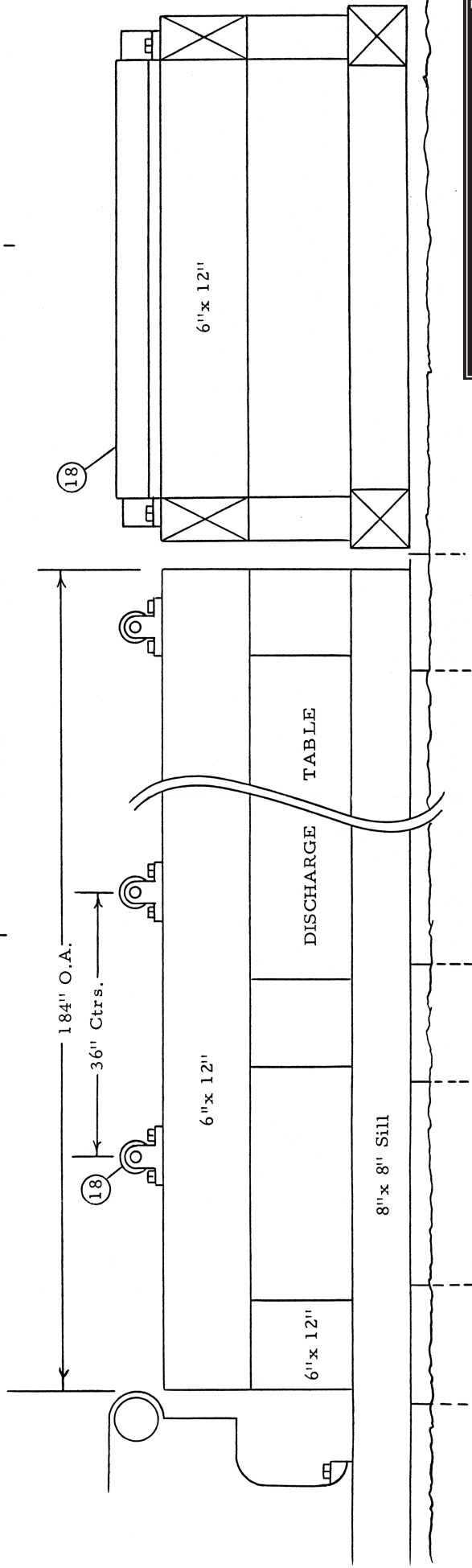
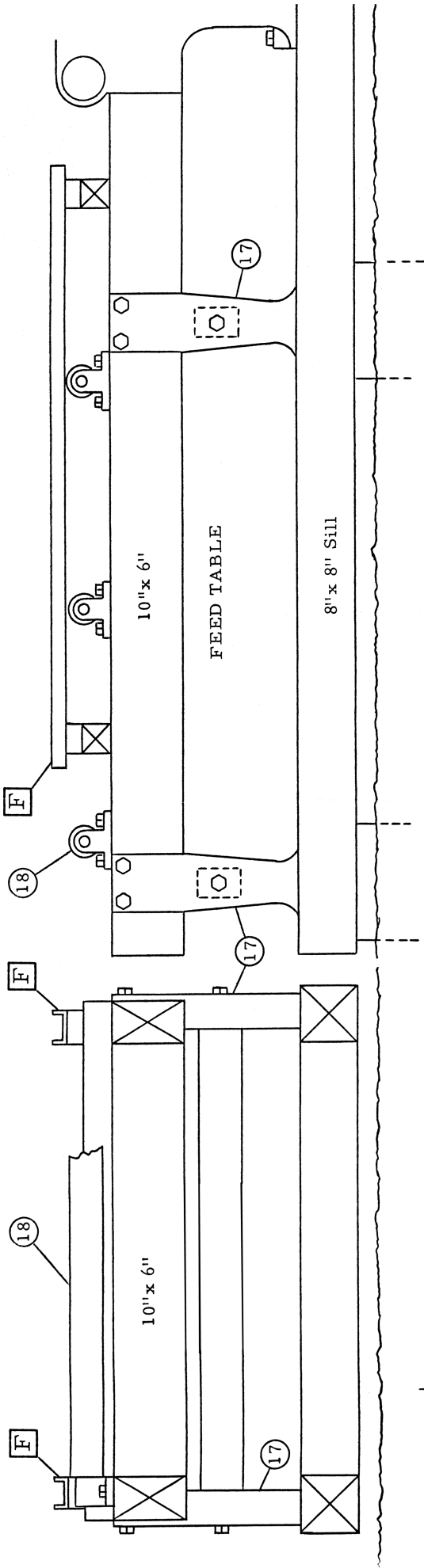
Additional Items Needed:

- | | |
|--|---|
| <ol style="list-style-type: none"> A. Blade Shaft B. Feed Shaft C. Tie Rod (3) D. 4" Belt E. 14" Belt F. Fence (2) | <ol style="list-style-type: none"> 1/16" Brass Rod .032" Brass Wire .032" Brass Wire "Tyvek" Envelope "Tyvek" Envelope 2 x 4 Stripwood or Brass Channel |
|--|---|

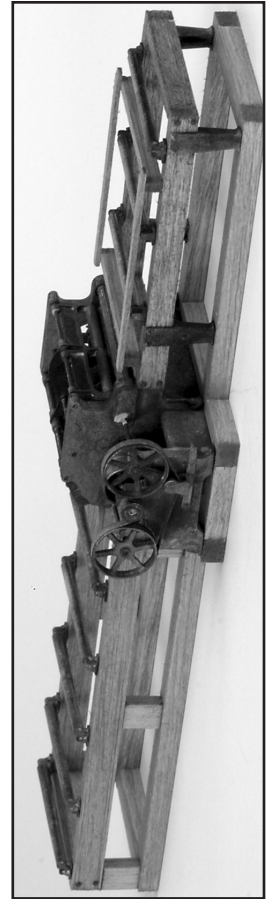




WP-910 Edger



SierraWest
Scale Classics



©2003 SierraWest Scale Models
Original C.H.B. Models drawings by Charles H. Brommer.
Supplemental templates by Brett Gallant.