

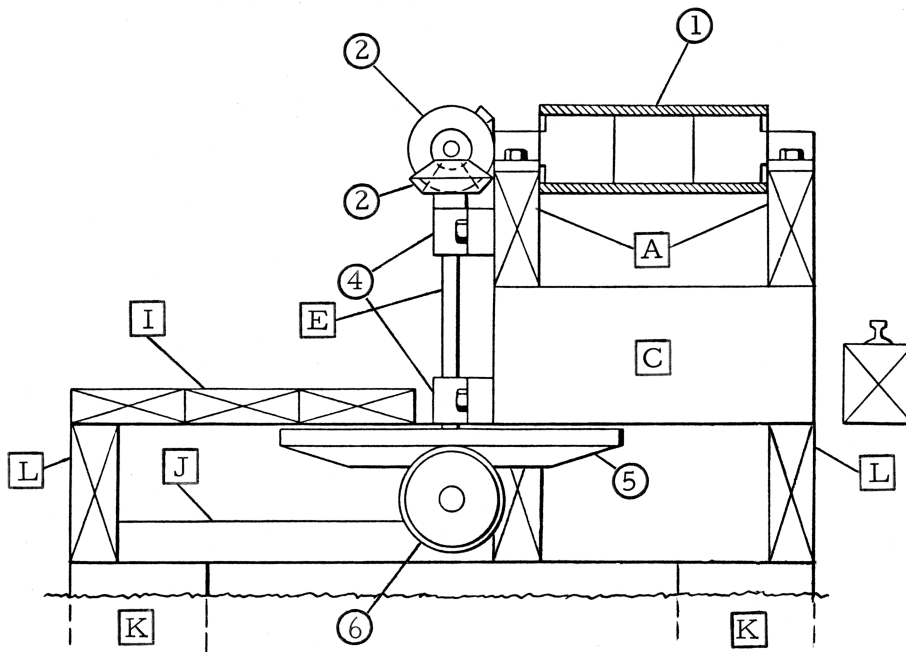
## WP-904 Live Rolls

### WP-904 Parts Provided:

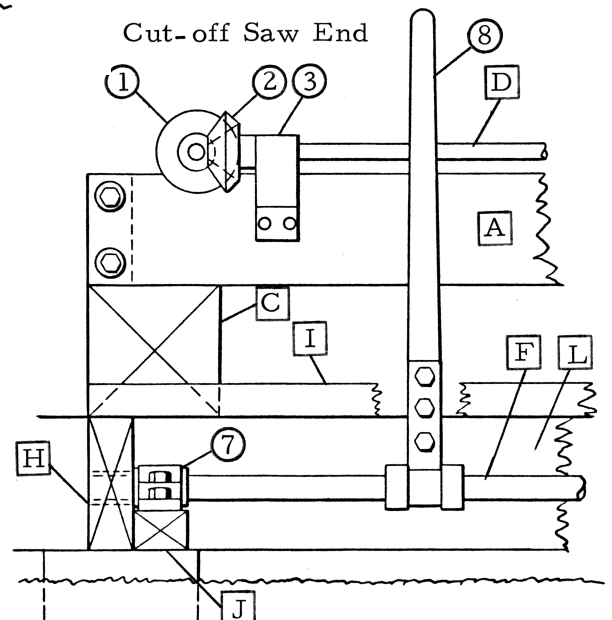
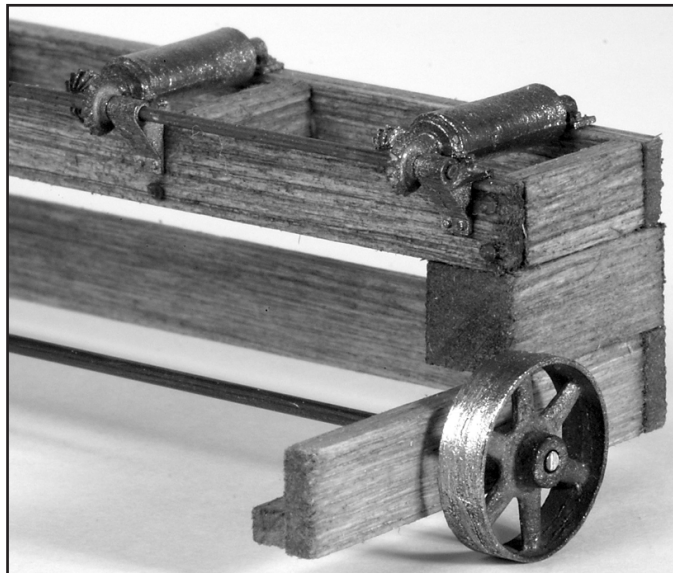
1. Roll Assembly (7)
2. Mitre Gear (9)
3. Corner Mounted Bearing (7)
4. 1½" Pillow Block (2)
5. Iron Bevel Friction
6. Paper Bevel Friction (2)
7. 2¼" Pillow Block (4)
8. Operating Lever
9. 24" Wheel

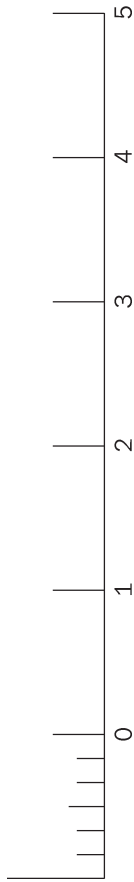
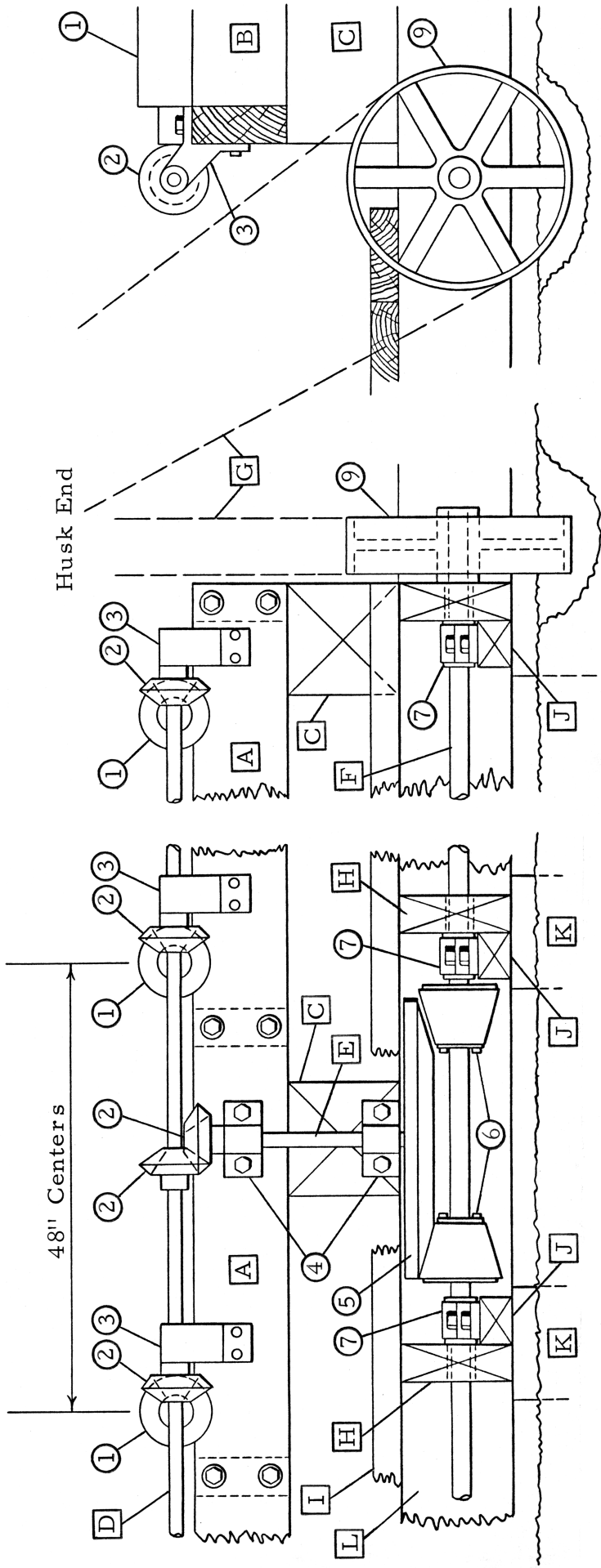
### Additional Items Needed:

- |                    |                     |
|--------------------|---------------------|
| A. Sill            | 4" x 10" Stripwood  |
| B. Spreader        | 4" x 10" Stripwood  |
| C. Support Timber  | 12" x 12" Stripwood |
| D. Gear Shaft      | .032" Brass Wire    |
| E. Vertical Shaft  | .032" Brass Wire    |
| F. Friction Shaft  | .045" Brass Wire    |
| G. 6" Belt         | "Tyvek" Envelope    |
| H. Joist           | 4" x 12" Stripwood  |
| I. Deck            | 3" x 10" Stripwood  |
| J. Shaft Support   | 3" x 5" Stripwood   |
| K. Footing         | ½" Wood or Styrene  |
| L. Floor Sill      | 4" x 12" Stripwood  |
| M. Nut/Bolt/Washer | Grandtline 93       |



(a) Front Floor sill does not line up with its counterpart in the husk section. Check distances from rail stringer.





©2003 SierraWest Scale Models  
 Original C.H.B. Models drawings by Charles H. Brommer.  
 Supplemental templates by Brett Gallant.

**SierraWest**  
 Scale Classics

P.O. Box 250088  
 Plano, Texas 75025  
 972-618-5563  
[sierrawestscalemodels.com](http://sierrawestscalemodels.com)