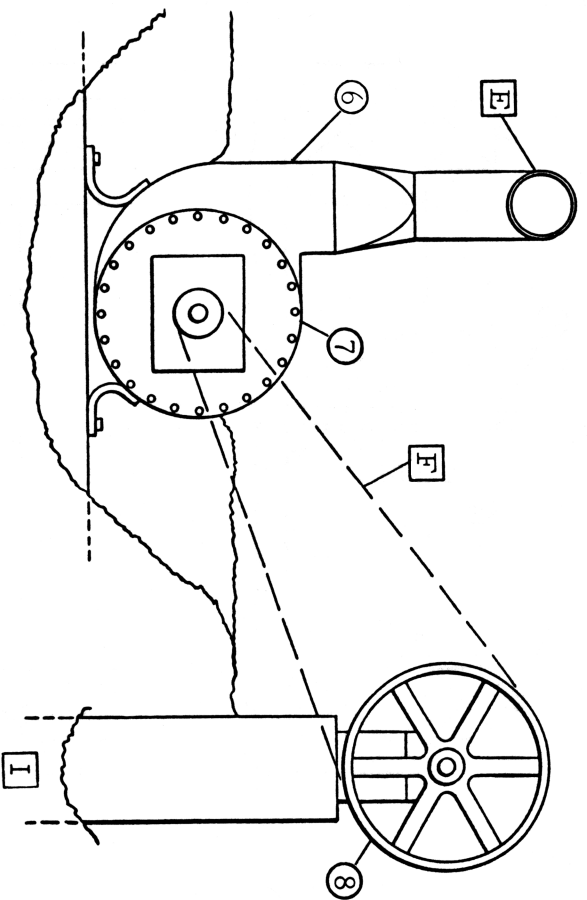


WP-903 Carriage Drive and Sawdust Blower



WP-903 Parts Provided:

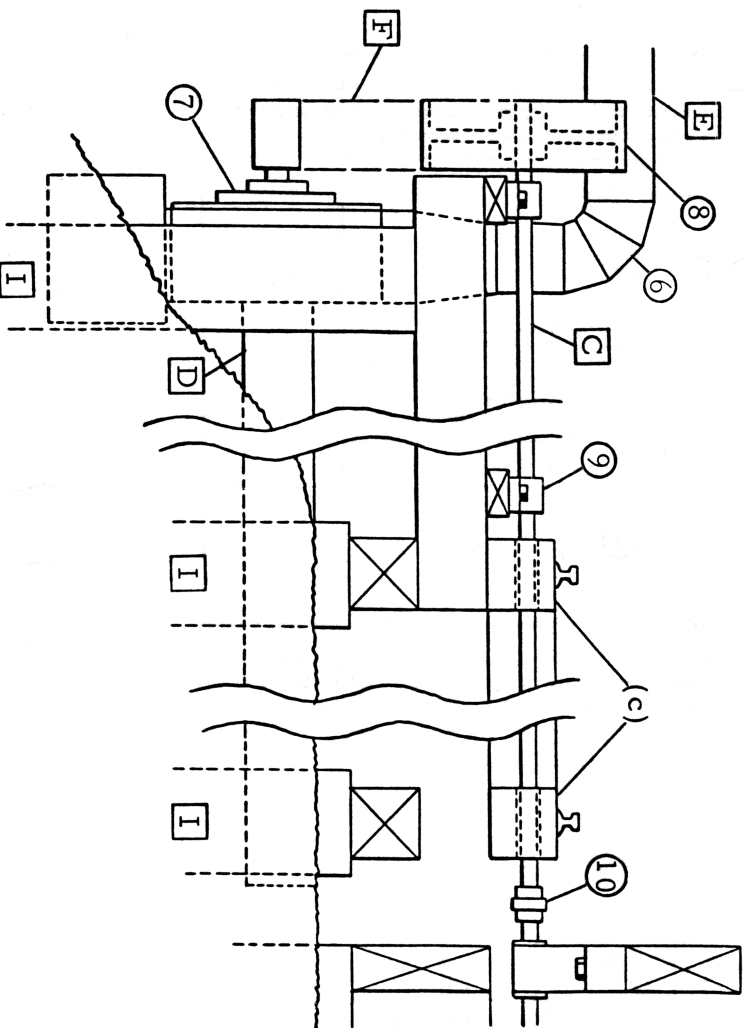
1. Rope Drum (3 pieces)
2. Drum Gear
3. Drive Pinion
4. 2 1/4" Pillow Block (6)
5. Rope Sheave (2)
6. Blower Housing
7. Blower Cover and Pulley
8. Blower Drive Wheel
9. 1 1/2" Pillow Block (2)
10. 1/2" Shaft Coupling

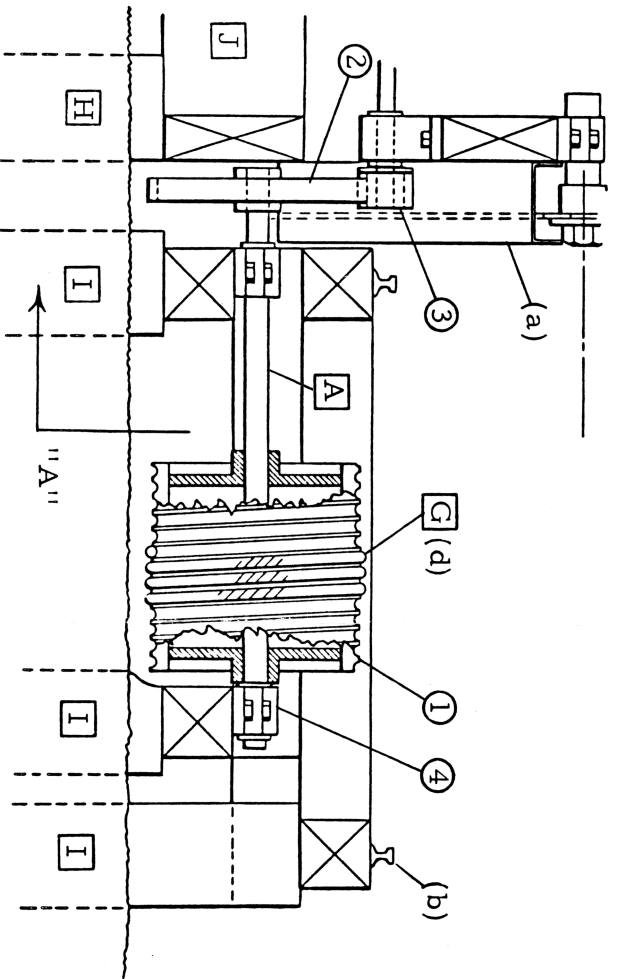
Additional Items Needed:

- | | |
|-----------------------|----------------------|
| A. Drum Shaft | .045" Brass Wire |
| B. Sheave Spindle | .045" Brass Wire |
| C. Blower Drive Shaft | .032" Brass Wire |
| D. Intake Duct | 1/8" Brass Tube |
| E. Discharge Duct | 1/8" Brass Tube |
| F. 6" Belt | "Tyvek" Envelope |
| G. Wire Rope | Non-Cotton Thread |
| H. Footing | 1/6" Wood or Styrene |
| I. Pile | 3/6" Dowel |
| J. Floor Joist | 4" x 12" Stripwood |

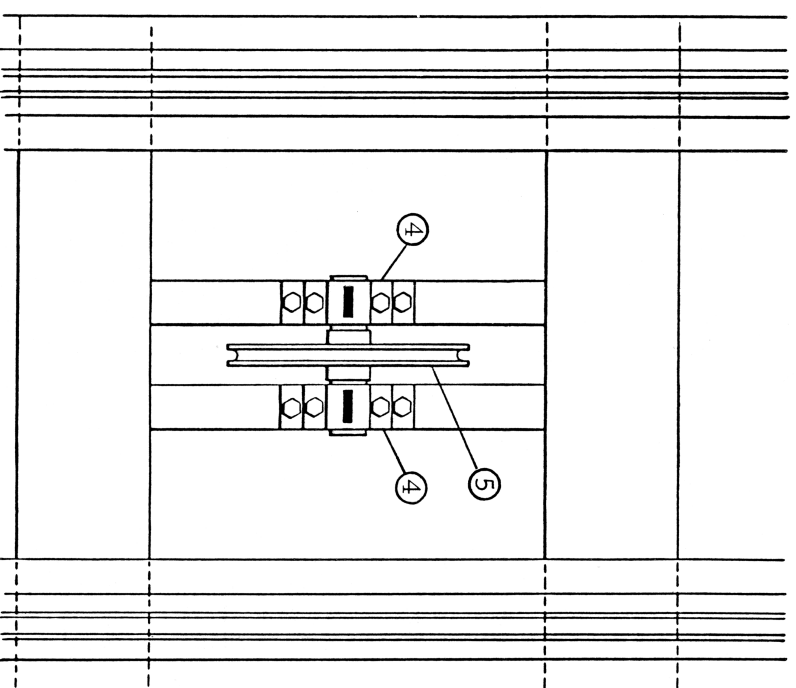
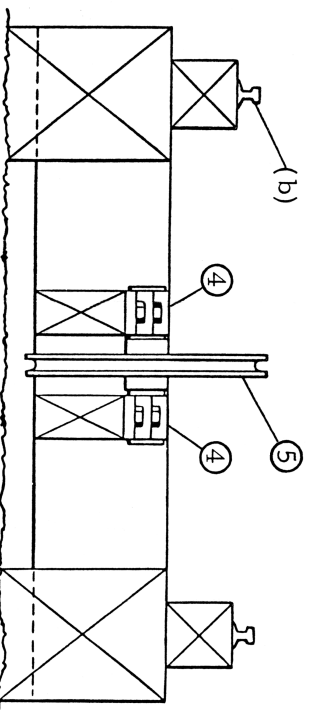
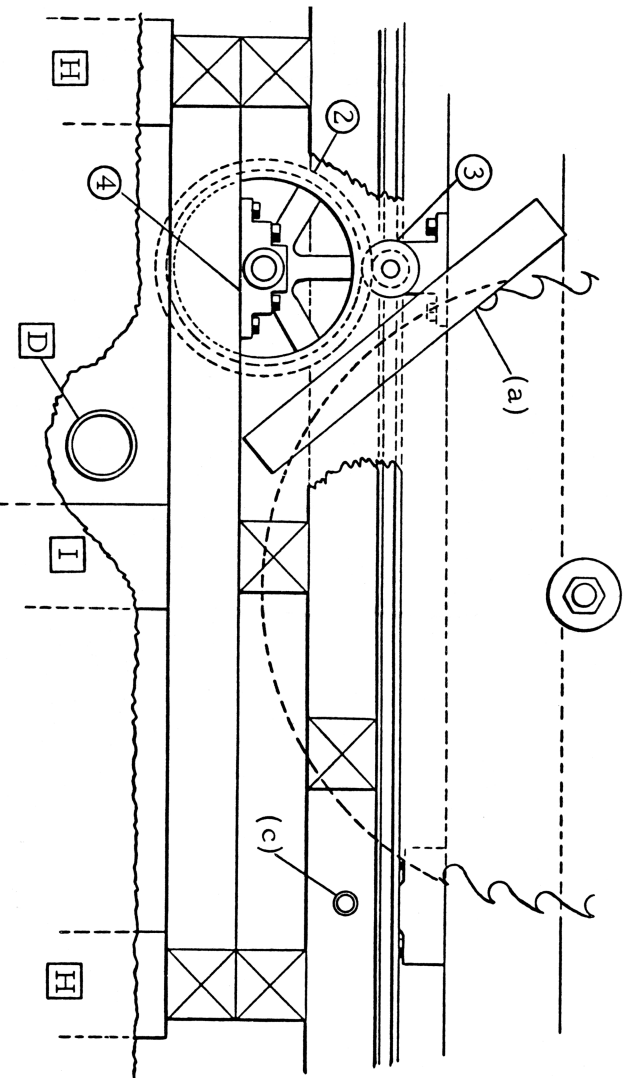
Additional Notes:

- (a) 4" x 7" x 33" sheet metal channel added to husk sill (Optional)
- (b) Use either code 55 or 40 rail
- (c) Stringer drilled to clear blower shaft
- (d) Three or four turns of rope on drum





Section "A-A"



SierraWest
OScale Classics™